

AFLATOUN INTERNATIONAL

TURNING DEPENDENCE INTO INDEPENDENCE

Many young learners are being educated for the past, instead of the future. We cannot take the risk that they will be failed by obsolete education systems, and left dependent and poor. Facilitating life skills and preparing them for the future are critical challenges for education today.

Education in the 21st Century

Do not complete their Basic Education



Do Not Complete Basic Education
45%

Do not learn basic Social & Financial Skills



Are Not Financially Literate
67%

They are not prepared for work life (graduates)

Education Providers

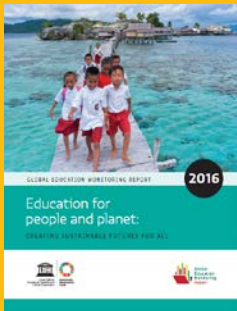
Yes 72%

No 55%

No 56%

Youth

Employers



OUR CORE ELEMENTS

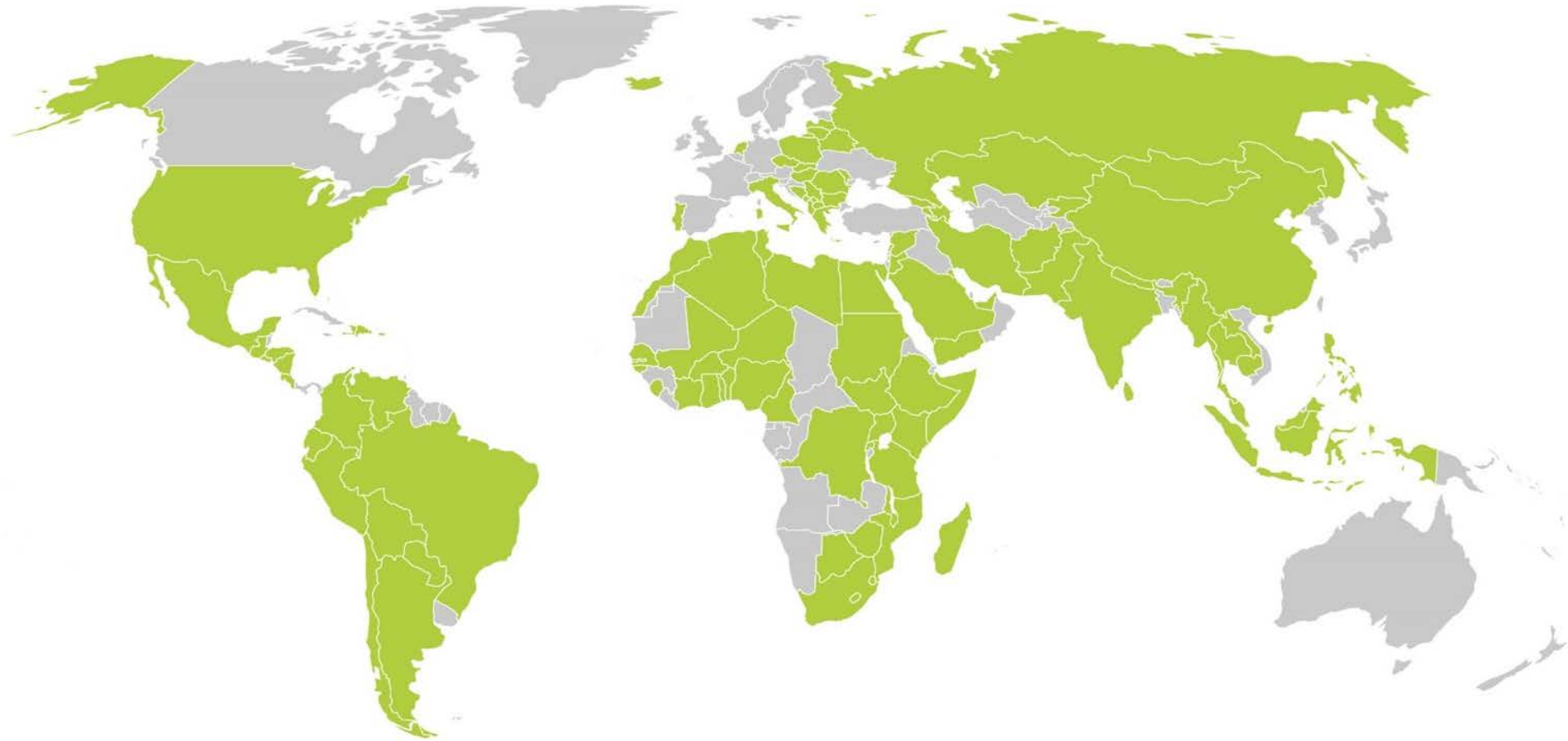
LIFE SKILLS AND ECONOMIC EMPOWERMENT: FIVE CORE ELEMENTS

- Personal Understanding and Exploration
- Rights and Responsibilities
- Saving and Spending
- Planning and Budgeting
- Social and Financial Enterprise

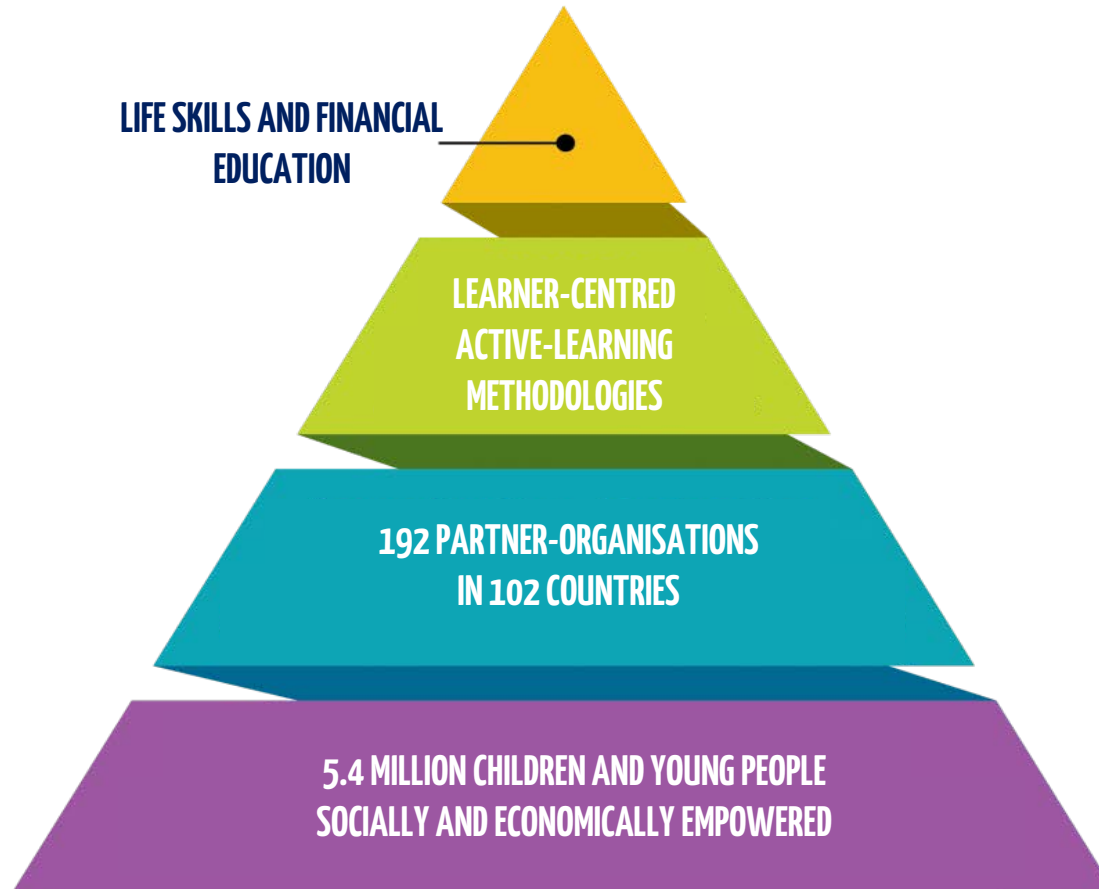
WHAT WE DO



WHERE WE WORK



OUR IMPACT MODEL



Financial Education for Girls in Brazil

MARIANA'S



CUPCAKES

AFLAYOUTH

- Recognition of a global challenge
- Early economic engagement (developing vs developed)
- Lack of opportunities
- Background of participants

AFLAYOUTH

- Programmatic resources to partners on LSEE
- 2-way approach: Entrepreneurship & Employability
- Beyond the classroom
- Holistic methodology



TRANSFORMING EDUCATION IN IVORY COAST



Reinforcing policy by providing scientific evidence & research insights



Partnerships with the cocoa and chocolate industry



Joining forces with NGOs & social enterprises to develop effective educational models

HERSHEY
THE HERSHEY COMPANY

YES!

EU4YOUTH INITIATIVE

Providing life, social, vocational and employability skills to young people in Armenia, Belarus and Ukraine.

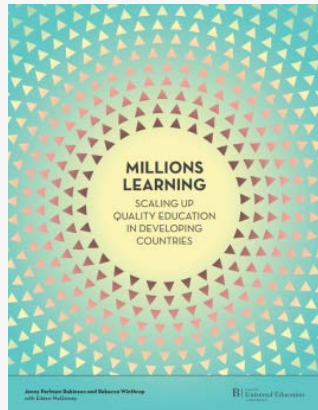
Training programme on entrepreneurship and a start-up fund.

Working with young people growing up in foster/residential care.



GLOBAL RECOGNITION

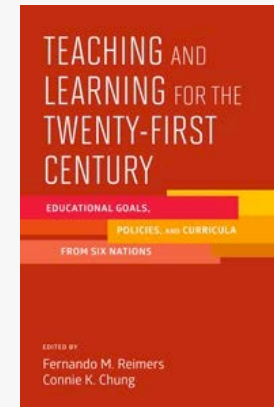
BROOKINGS



Aflatoun has been recognised by The Brookings Institution for its highly scalable social franchise model and adaptability to different contexts across regions.



HARVARD
UNIVERSITY



Aflatoun is highlighted as one of 10 initiatives in the most recent publication of the Global Education Innovation Initiative from Harvard University's GSE.

QUESTION TIME

